

## Other related products

Records 2ch video, 4ch analog,  
CAN, GPS and Pulse in perfect sync.  
An All-In-One Data Recorder

Video NV Recorder  
**VR-24**



10 m/s<sup>2</sup> vibration tester  
which allows you to check  
accelerometers in the field.

Portable calibrator  
**CA-20**



Converts electric charge output type  
sensors into voltage output type sensors  
(1pc → 1mV)

Charge converter  
**CC-20**



Featuring high-bandwidth,  
multi-channel and long  
recording time.

Wide-band data recorder  
**WX-7000 Series**

<http://datarecorder.jp/en/>  
<http://loadcell.jp/en/>

## TEAC CORPORATION

1-47 Ochiai, Tama-shi, Tokyo 206-8530, Japan +81-42-356-9154

**TEAC AMERICA INC.** <http://www.teac.com/>  
1834 Gage Road, Montebello, California, 90640, U.S.A. +1-323-726-0303

**TEAC EUROPE GmbH.** <https://teac.eu/en/>  
Bahnstrasse 12, 65205 Wiesbaden-Erbenheim, Germany +49-(0)611-7158-362

**TEAC SALES & TRADING(Shenzhen) CO.,LTD.**  
Room 817,Block A, Hailun Complex, 6021 Shennan Blvd.,Futian District,ShenZhen,China +86-755-8831-1561

Copyright© 2017 TEAC CORPORATION. All rights reserved.

Company names and product names in this document are the trademarks or registered trademarks of their respective owners.  
Features and specifications are subject to change without notice.  
Precaution : To ensure safe handling and operation, read the Instruction Manual before use.

PRINTED IN JAPAN 1117・ISD-045B-UNI

# TEAC

<http://loadcell.jp/en/>

## Piezoelectric type accelerometer & Related products digest catalog



*For Car Testing*

*Vibration testing on car body and parts*



*For Mobile*

*Shock measurement in drop testing*



*For Turbine*

*Vibration testing on turbines*

**TEDS**

**Built-in  
Pre-amplifier**

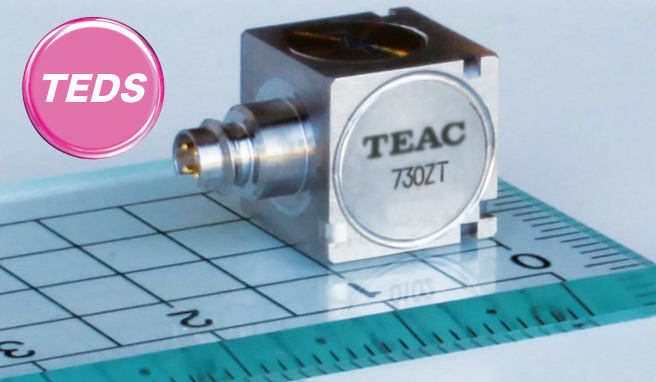
**3 Axes**

**Comes with a  
3.3m special cable**

**2 models available to best suit your application**

**730ZT**  
**1.0mV/m/s<sup>2</sup>**

**731ZT**  
**10.0mV/m/s<sup>2</sup>**



730ZT / 731ZT is a 3-axis accelerometer with a built-in pre-amplifier which is 10 cubic millimeter in size and 4.4g in weight. Its high frequency response and tiny super-lightweight feature allow to measure acceleration on small objects. It is also appropriate for various tests on engines because of its high operational temperature.



# 730ZT/731ZT



Spec

**TEDS**

## Tiny & Lightweight

### 3 Axes

**Built-in  
Pre-amplifier**

**Comes with a  
3.3m special cable**



## Optional accessories

| Model   | 730ZT   | 731ZT   |
|---|---|---|
|   | Standard type   | High sensitivity type   |
| Sensitivity (mV/m/s <sup>2</sup> )              | 1.0 ± 10 % (9.8 mV/g)   | 10.0 ± 10 % (98 mV/g)   |
| Transverse sensitivity (max)                    | Less than 5 %   |   |
| Base noise (max)                                | 20 μ Vrms   | 40 μ Vrms   |
| Compensated temperature range                   | −50 °C ~ 120 °C   | −50 °C ~ 110 °C   |
| Frequency response<br>(±3dB)                    | X, Y axis : 0.5 Hz ~ 15,000 Hz<br>Z axis : 0.5 Hz ~ 20,000 Hz           | X, Y axis : 0.5 Hz ~ 10,000 Hz<br>Z axis : 0.5 Hz ~ 18,000 Hz |
| Resonance Frequency                             | 55 kHz or higher (Z axis)   |   |
| Max. acceleration (m/s <sup>2</sup> )           | ±5000 (±510g)   | ±450 (±46g)   |
| Max. tolerated acceleration (m/s <sup>2</sup> ) | 30,000(3,060g) or higher  | 30,000(3,060g) or higher                                      |
| Output impedance                                | Less than 100 Ω   | Less than 500 Ω   |
| Ground  | Case ground   |   |
| Cable   | Special cable * CL-730B (included) / CL-730M (optional)                 |   |
| Connector                                       | CZ664   |   |
| Case material                                   | Titanium  |   |
| Size (W x H x D)                                | 10 mm x 10 mm x 10 mm (Connector excluded)                              |   |
| Weight  | approx. 4.4 g   |   |
| Included  | Mounting screw (M3 x 0.5 x 4) x1, CL-730B (3.3m, 4P-BNC), Mount base x1 |   |

|              |  |         |
|--------------|--|---------|
| Cable        | For 730ZT / 731ZT ( 3.3m, 4P-Miniature ) | CL-730M |
|              | For 730ZT / 731ZT ( 3.3m, 4P-BNC )       | CL-730B |
| Mount base   | For 730ZT / 731ZT 5 pcs included         | PS-730Z |
| Magnet mount | For 730ZT / 731ZT                        | MG-730Z |



Cable ( 3.3m, 4P-Miniature



Cable ( 3.3m, 4P-BNC )



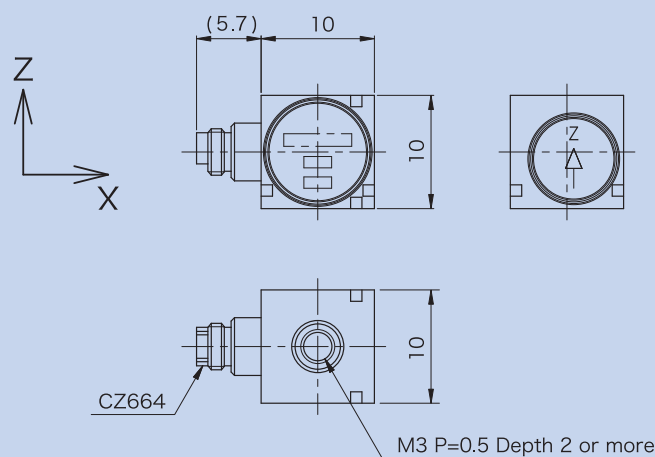
Mount base



Magnet mount

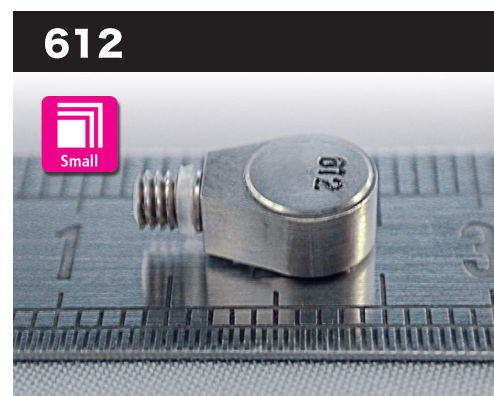
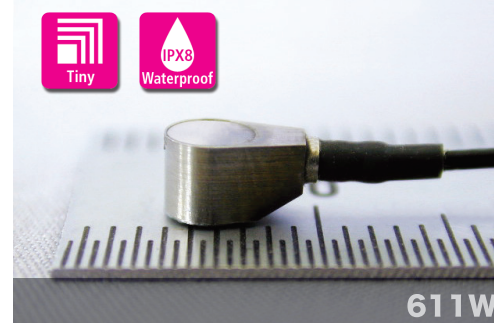
## Dimensions

730ZT  
731ZT  
Common



**Electric charge type**  
**Tiny accelerometer series**

## Even more products for your applications



| Model                                       | 611                    | 611W                      |
|---|------------------------|---------------------------|
| Feature                                     | Super small            | Super small<br>Waterproof |
| Max.<br>Acceleration<br>(m/s <sup>2</sup> ) | ±100,000<br>(±10,197g) | ±10,000<br>(±1,020g)      |
| Sensitivity<br>(pC/m/s <sup>2</sup> )       | 0.035<br>(0.34 pC/g)   | 0.0455<br>(0.45 pC/g)     |
| Frequency response<br>(Hz) ±3dB             | fc~20,000              | fc~20,000                 |
| Compensated<br>temperature range<br>(°C)    | -50~160                | -50~160                   |
| Cable                                       | 3m (installed)         | 3m (installed)            |
| Weight (g)                                  | approx. 0.2            | approx. 0.2               |
| Waterproof rank                             | —                      | IPX8                      |

※611W: BUILD TO ORDER

| Model  | 611ZS                                   | 611ZSW                                  |
|--|---|---|
| Feature  | Super small                             | Super small<br>Waterproof               |
| Max.<br>Acceleration<br>( $\text{m/s}^2$ )                 | $\pm 25,000$<br>( $\pm 2,550\text{g}$ ) | $\pm 25,000$<br>( $\pm 2,550\text{g}$ ) |
| Sensitivity<br>( $\text{pC/m/s}^2$ )                       | 0.04<br>(0.39 pC/g)                     | 0.04<br>(0.39 pC/g)                     |
| Frequency response<br>(Hz) $\pm 3\text{dB}$                | $f_c \sim 20,000$                       | $f_c \sim 20,000$                       |
| Compensated<br>temperature range<br>( $^{\circ}\text{C}$ ) | $-50 \sim 160$                          | $-50 \sim 160$                          |
| Cable  | 3m (installed)                          | 3m (installed)                          |
| Weight (g)   | approx. 1.2                             | approx. 1.3                             |
| Waterproof rank  | —                                       | IPX8                                    |

※611ZSW : BUILD TO ORDER

